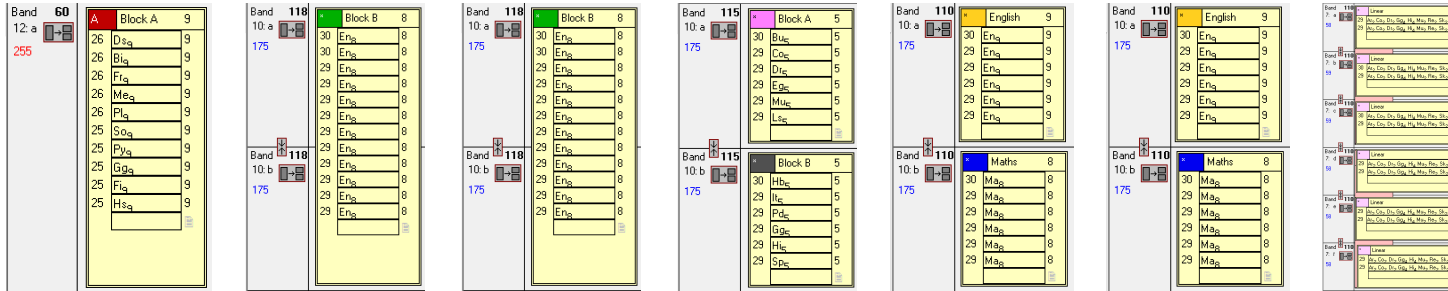


Efficient Timetable Creation - where to start?

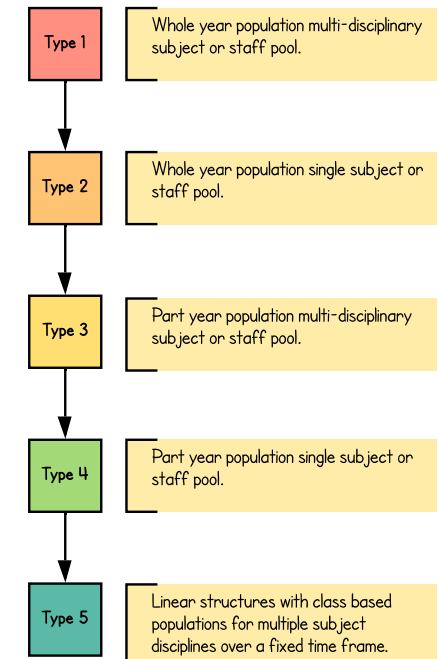
Define: Consider and identify seven types of structures in your curriculum model. These will form be formed using your timetable software (illustrated below using SIMS NOVA-T6). There will be small variations from these basic types but the order of timetable delivery will be formed from an understanding of the impact of how these interrelate to other elements.



- 1 Blocks that contain whole year group populations with multiple subject disciplines across the classes delivered by multi-disciplinary staff
- 2 Blocks that contain whole year group populations with a single subject disciplines across the classes delivered by multi-disciplinary staff
- 3 Blocks that contain whole year group populations with a single subject disciplines across the classes delivered by single disciplinary staff
- 4 Blocks that contain part year group populations with multiple subject disciplines across the classes delivered by multi-disciplinary staff
- 5 Blocks that contain part year group populations with single subject disciplines delivered by multi-disciplinary staff
- 6 Blocks that contain part year group populations with single subject disciplines delivered by single disciplinary staff
- 7 Linear blocks that contain part year group populations with many subject disciplines planned for each class delivered by different staff for each subject



Order of delivery: positional flexibility increases.



Distribute: Below we get to see how these types of organisational frames are typically used across the year groups. An indication of typical %age spread and the types of frameworks employed within schools of differing sizes.

